

# CATALOGUE OF METAL WARE EXHIBITS IN THE GOVERNMENT MUSEUM CHENNAI



R. BALASUBRAMANIAN

*Published by*  
**S.S. JAWAHAR, I.A.S.,**  
THE PRINCIPAL SECRETARY AND  
COMMISSIONER OF MUSEUMS,  
GOVERNMENT MUSEUM,  
EGMORE, CHENNAI - 600 008.



**CATALOGUE OF METAL WARE EXHIBITS  
IN THE GOVERNMENT MUSEUM  
CHENNAI**

**R. BALASUBRAMANIAN,**  
Curator, Archaeology Section,  
Government Museum, Chennai - 600 008.

*Published by*  
**S.S. JAWAHAR, I.A.S.,**  
PRINCIPAL SECRETARY AND  
COMMISSIONER OF MUSEUM  
EGMORE, CHENNAI - 600 008.  
2011

**First Edition : 2011**

**No. of Copies : 500**

© Commissioner of Museums,  
Government of Tamil Nadu,  
Chennai-8.

**Price : Rs. 110/-**

Published with the financial assistance received from the Ministry of Culture,  
Government of India and Government of Tamil Nadu.

**Printed at : Government Central Press, Chennai-600 079.**



**Dr. T.S. SRIDHAR, I.A.S.**  
Principal Secretary and  
Commissioner of Museums,  
Government Museum,  
Egmore, Chennai 600 008.

Telephone : 044 – 2819 3778

Fax : 044 – 2819 3035

### **Foreword**

The Chennai Government Museum is famous for its collections of artefacts. It has a small but impressive gallery of metal ware objects..They were used in the household in the past centuries. There was a long felt need for a catalogue of these objects. Thru. R. Balasubramanian, Curator, Archaeology section has prepared a Catalogue of Metal ware Objects in the Collections of Government Museum, Chennai, which I hope will be useful for scholars, researchers and students.

Date : 16-03-09  
Station: Chennai

*T. S. Sridhar*  
(T.S. SRIDHAR)

## CONTENTS

S.No.		Page No.
1.	Ivory Objects	1
2.	Porcelain wares	8
3.	Glazed Potteries	10
4.	Muslim Utensils	12
5.	Bidrie wares	14
6.	Standing Lamps	18
7.	Drinking Vessels	21
8.	South Indian Toys	24
9.	Boxes and Nut-cutters	30
10.	Asian Bronzes	35
11.	Nepal-Tibet Bronzes	37
12.	Vaishnavite Temple Rituals	40
13.	Hand Lamps	44
14.	Saivite Temple Rituals	48
15.	Pavai Lamps	52
16.	Lamps	55
17.	Lacquer Ware	56
18.	Lamps	58
19.	Ornamental Plates	59
20.	Copper embossed plates	60

## INTRODUCTION

The Government Museum, Chennai is well known for its collections of minor arts. They are housed in the first floor of the Front Building. A great majority of the exhibits are of metal ware objects. While the potter's products were popular with the masses, their imitations in metal began to be made by sthapatis for use in temple as well as in the houses of the well-to-do. No doubt the earthenware pots and pans had their own attraction and artistic embellishments. But the decorative designs with which the articles of metal ware came to be beautified surpassed both in beauty and variety those met with in pottery. Even the very shapes of the different items of an independent category of articles are artistic.

There are twenty two showcases in the Metal ware gallery where in different types of articles of daily use in the erstwhile household and in temples are exhibited. Thus among them lamps are a number of groups such as hand lamps, hanging lamps and Dipalakshmis or women lamp-bearers (Pavai-vilakku). In each of these groups distinct and independent types are observed. The Dipalakshmis are specially made by the wealthy people for donating to temples. In the temples of Tamil Nadu one will come across them frequently. Among the standing lamps the most popular are the Hamsa and Kinnari lamps. A special variety of standing lamps are called in

Tamil “Kilai Vilakku” (Dipa Vriksha in Sanskrit) with a number of branches from which hang down rows of lamps is an important item usually met with in temples. In large temples like Madurai temple such lamps of huge dimensions may be found. There are two specimens in the collection of this Museum, which are called wedding lamps.

The other categories of metal ware articles are trays including Thanjavur trays which have bas-reliefs in copper and silver on their inner side, utensils employed in the worship of a temple in South India, the articles of daily use like Chellappetti (in which betel leaves, cloves, betel nuts and Chunnam are kept), combs, collyrium boxes, Chunnam boxes, nut cutters and so on; toys, bell metal utensils in everyday use in a South Indian home and models of household utensils of the well-to-do of Malabar.

A collection of Bidriware articles are also on show in this gallery, besides a representative of collection of utensils used by Muslims of South India. The Bidriware articles are beautiful in their form and designs on them. In Bidrie, the metal ground is copper, tin and lead made black on the surface by a solution of “Sal ammoniac” and “Sulphate” when the required pattern is graven over the desired article under preparation and inlaid with silver, it is washed with oil and polished, the effect is magical.



Buddhist bronzes from Nepal and Tibet are also displayed in this gallery. The most important among them are the Lanka and Tara. A noteworthy feature of these articles is that they are made by hollow cast method and they are gilt. The sculptures of Nepal and Tibet are characterized by atibhangas, slimness and excessive embellishments. These features are readily observed in the specimens.

A small collection of specimens illustrating lacquer ware is also on display in this gallery. They include fans and few containers. Among other groups of articles in the gallery two sets of porcelain wares and glazed pottery deserves special mention. Glazes are vitreous coating used to conceal the ceramic body. It is composed of certain colouring agents when they are fired in the kiln they give appearance.

Ivory collections are also worth mentioning. They form a special class of articles. They give us fairly good account of the exceptional skill attained by the ivory carvers.

## CATALOGUE OF THE EXHIBITS IN THE METALWARE GALLERY

### IVORY OBJECTS

#### **GAJALAKSHMI**

Seated on a lotus and attended by two elephants. A prabha is placed behind her. All of which are placed on a ebony pedestal.

Acc. No. 1112

Length of Base 15.5cm; Breadth 7.7cm.

#### **RAMA, SITA, LAKSHMANA AND HANUMAN**

Standing on a rectangular wooden pedestal with ivory edges. Rama holds bow and arrow in his hands. Sita holds a lotus in her right hand. Lakshmana has his hands in anjali while a bow leans against his left shoulder. Hanuman is also seen in anjali posture.

Acc. No. 1111

Length of Base 13cm; Br.6.9cm.

#### **GANESA**

Seated on a pedestal with his vahana in ivory which is placed within a vimana of sandalwood work. There is a halo also of sandalwood work placed behind him.

Acc. No. 1105

Length of vimana 20.2cm; Br 7.2cm; Ht. 30.7cm.

#### **IVORY BOX**

Oval box with lid surmounted by a finial. Foliage designs are present on the outer side of the box and the lid.

Acc. No. 1113

L—11.7cm; Br. 10.3cm; ht. 5.5cm.

#### **CUP**

Used for keeping sandalwood paste inlaid with ivory work consisting of dots, foliages. Arrowheads and leaves.

Acc. No. 1146

**OVAL BOX**

Oval box without lid and base showing on the outer side foliage designs and in the midst representations of Venugopala with cattle, Nataraja and two conch blowers.

Acc. No. 1114

L. 13.1cm; Br. 10.5cm; Ht. 9.2cm.

**DEER**

Recumbent long horned deer placed on a rectangular base of ebony.

Acc. No. 1100

Length of base 9.7cm; Br. 5.2cm.

**HUNTING SCENE**

Hunting scene in a forest area is beautifully carved. In the midst of shrouds there are two deer, near the cut tree. A boar was held at bay by two dogs. A hunter is seen lying hidden and with gun in his hand shooting at the boar, and two rabbits issuing out of the holes. The background is done in wood with black colouring and in oval shape.

Acc. No. 1104

Length of Base 18.2 cm; Br. 10.7cm.

**COW**

Recumbent cow placed on a rectangular base of horn work

Acc. No. 1098

L.of Base 8.5cm; Br. 5.3cm.

**DEER**

Recumbent deer placed on a rectangular base of horn work.

Acc. No. 1101

L. of base 8cm; Br. 4.8cm

**BULL**

Recumbent bull placed on a rectangular background of horn work. The hump of the bull is prominent. A bell is attached to its neck.

Acc. No. 1097

L.of the base 9cm; Br. 5-6cm

**DEER**

Recumbent deer is placed on a rectangular base of horn work.

Acc. No. 1102

L.of base 7.9cm; Br. 4.6cm

**GOAT**

Recumbent goat is placed on a rectangular base of horn work.

Acc. No. 1099

L. of base 8.6cm; Br. 4.9cm.

**DEER**

Shows as about to run on a rocky growth of wild growth, placed on an oval base of ebony.

Acc. No. 1103

Lof base 11.4cm; Br. 4.8cm.

Rectangular sandalwood box with horn work superimposed by ivory carvings. It rests on four lion's feet. Ivory work shows foliage designs and bands of painted figures of Krishna, Garuda, a Devi probably Lakshmi and Rama.

Acc. No. 1137

L. 9.5cm; Br. 9cm.

Rectangular box with apertures for thread and needle, pin cushion and other articles of personal utility. Ivory carvings and superimposed on horn work laid over sandalwood. Ivory work which consists of foliage shows on a central band on the lid the painted figure of Sarasvati.

Acc. No. 1138

L. 16cm; Br. 12.5cm.

### **PEN HOLDER**

Pen and ink bottle of excellent perforated workmanship. The pen holder has two holes to hold pens and has at one end two minaret shaped handles, one of which bears perforated carvings. The ink bottle holder is cylindrical with a broad bottem is a sample of excellent perforated workmanship featuring mainly foliage and is secured to the pen holder by a nail.

Acc. No. 1116

Ink Bottle holder base- 6.2cm; Ht. 7cm.

L. of Pen-holder 24.9cm; Br. 3.9cm.

Ivory piece showing the design of foliage and a mythical bird between a parrot and a hamsa.

Acc. No. 1179

TRICHY

L. 20.5cm; Br. 7.5cm.

Ivory piece showing the design of foliage and a mythical bird between a parrot and a hamsa, each with a rider on them.

Acc. No. 1180

TRICHY

L. 19.5cm; Br. 7cm. .

Book-rack, foltable of hamsa pitha type, consisting of two planks with two sides cut into arches and intertwining at their middle as apparent by three groves into which they(Planks) have beenlet in skillfully. Ivory work has been inlaid on the outer sides revealing foliage, rosettes, lotuses, stars and flowers.

Acc. No. 1145

Mysore

Ebony inlaid with ivory.

L. 44cm; Br. 28.3cm.

Hexagonal box with detachable lid. Ivory work showing foliage and star and circular designs is inlaid on the outer sides of the box and the lid.

Acc. No. 1142

MYSORE

Ebony inlaid with Ivory.

L. 10.2cm; Br.8.8cm.

Similar to the above in all respects except that the ivory works shows foliage, leaves lotuses and rosettes.

Acc. No. 1143

MYSORE

Ebony inlaid with Ivory.

L. 10.2cm; Br.8.8cm.

Circular button with crescent shaped clasp fixed to it, and with a painting of Vishnu on its outer surface.

Acc. No. 1129

IVORY

Visakhapatnam, Andhra Pradesh.

Dia 3cm

-Do-

Acc. No. 1130

-Do-

Acc. No. 1131

-Do-

Acc. No. 1132

-Do-

Acc. No. 1133

-Do-  
Acc. No. 1134

-Do-  
Acc. No. 1128

Paper cutter with handle bearing foliage designs.  
Acc. No. 1118  
Ivory  
Travancore  
L.23cm

Paper cutter with handle bearing foliage design showing in its midst  
on one side a rishi and on the other a deer.  
Acc. No. 1119  
Ivory  
Travancore  
L.24.2cm

Comb with teeth at both the ends and with a painting of birds  
perched on foliage in the middle part.  
Acc. No. 1124  
Visakhapatnam, Andhra Pradesh  
L.11cm; Br. 7.3cm

-Do-  
Acc. No. 1125  
Visakhapatnam, Andhra Pradesh  
L.12.3cm;Br.7.3cm

-Do-  
Acc. No. 1126  
Visakhapatnam, Andhra Pradesh  
L.10.7cm;Br.7.4cm

Small comb with teeth at both ends and with paintings of birds and foliage in the middle part.

Acc. No. 1127

Visakhapatnam, Andhra Pradesh

L.9.5cm;Br.7.4cm

Edges of horn work and ivory carvings on the edges as well as on the outer cover. Ivory work on the cover which is profuse consists of foliage designs which shoe in their midst oval medallions painted with the following deities- one in each- Andal, Ranganatha, Kulasekhara Alvar, Krishna, Rama, Sarasvati, Hanuman and Garuda.

Acc. No. 1122

Sandalwood with Ivory and horn work.

Visakhapatnam, Andhra Pradesh.

L.30.5cm; Br.23cm.

Book rack(foldable) of sandalwood with ivory edges and ivory plate as cover. The ivory part is painted with foliage designs.

Acc. No. 1123

Sandalwood with Ivory and horn work.

Visakhapatnam, Andhra Pradesh.

L.30.4cm; Br.7.3cm.d chess game consisting of the following two sets one on white and

Carved chess game consisting of the following two sets one on white and the other on black base.

Acc. No. 1149

(i) King seated within a covered howdah placed on an elephant back with the attendants and a mahout. L.2.4cm; Br.1cm

(ii) Minister on an open seat placed on an elephant with a mahout in front. L. 2cm; Br.0.8cm. (iii)&(iv) Mahout on elephant. L.1.9cm; Br. 0.8cm

(v)&(vi) Horsemen L.1.7cm; Br.0.8cm.

(vii) & (viii) warrior on the back of ostrich L.1.7cm; Br.0.8cm.

(ix) & (x) Soldier L.1.7cm; Br.0.8cm

-do- ii set



Tirupati, Made of Ivory.  
Ivory Chess board with detachable stand.  
Acc. No. 2190/81

## PORCELAIN WARES

Big oval bowl with wide mouth provided with handles. A part of it near the bottom is chamfered into two facets. It bears besides the Company's coat of arms and legend repeated twice with foliage designs and borders in strong and bright gold, orange and red. The manufacturer's mark is printed on the bottom reading as :

Chamberlains  
Worcester  
&155  
New Bond Street,  
London  
Royal Porcelain Manufacturer.  
L at mouth 28cm; Br. 21.2cm.  
Ht. 16cm.  
Acc. No. 1031

Large oval dish with lid. The dish is partitioned in the centre by a screen. The lid rises up like a canopy and is surmounted by a ring. The usual legend and coat of arms of the United East India co., are present twice within the dish and twice over the lid. The colours employed at the edges of the dish, lid and partition and the ring are yellow, blue and black. The blue is faded in some places that it appears grey.

Acc. No. 1027  
DISH  
L.34.2cm; Br. 26cm  
LID  
L. 31.3cm; Br. 23.7cm

Large saucer-dish decorated with colours of the "famille rose" the design consisting of the rose coloured peonies on a green ground. These dishes were made from the first quarter of the nineteenth century, possibly earlier, for the Muhammeden market in India, the Malay peninsula and Archipelago and elsewhere.

Acc. No. 1043

Dia. 36.9cm

Oval dish with lid surmounted by a knob. The dish has got two handles like stumps one at either end opening into the base of the dish below. The purpose of such an opening is not clear. One of the openings has however, a perforated cover. The usual legend and coat of arms of the United East India company are present once in the centre of the dish and twice on the lid. Designs are in black, gold, orange and chocolate are present both on the lid and the dish.

Acc. No. 1034

DISH

L. 39.5cm; Br. 27.8cm

LID

L. 32.4cm; Br. 24.3cm

Oval saucer-dish with perforated rim showing the Company's coat of arms and legend in the on the rim a border in which black and orange figures.

Acc. No. 1038

L. 25.7cm; Br.23cm

Large saucer-dish decorated in the centre with a border at the rim showing foliage. The purpose for making such dish is the same as the earlier ones.

Acc. No. 1044

Dia.36.5cm

Square saucer-dish in the shape of a lotus with the coat of arms and the legend of the United East India Co.

Acc. No. 1025

19cm square.

Rectangular deep bowl with lid surmounted by a knob. The whole has indented corners. The bowl has got two handles formed by intertwining twigs. The East India Co's coat of Arms and the legend are present twice on the bowl and twice on the lid. Border designs show black and orange and gold while gold is seen at the knob and handles.

Acc. No. 1035

Bowl

L. 27cm; Br. 23.7cm

Lid

L.26.4cm; Br. 22.8

Perforated oval bowl with the usual legend and coat of arms of the United East India Co. It should have had a ring-like handle connecting two sides but is now broken and missing. Orange with black edges forms the border of the rim.

Acc. No. 1024

L. at mouth 19.5cm

Br. At the mouth 17cm.

## GLAZED POTTERY

Ganesa seated on a padmasana with four hands having the usual emblems.

Acc. No. 1060

Karigiri

Ht. 14.5cm

Long necked water vessel with a detachable lid shaped like a spread lotus. It is provided with two handles at its neck.

Acc. No. 1059

Karigiri

Ht. 22.5cm. Dia of the lid 3.4cm; Dia of the mouth 5cm

Ornate vase shaped like a kalasa with four makara shaped handles and with detachable lid. It is in the shape of a lotus. At the base the Tamil word "ne 14.karigiri" is written.

Acc. No. 1055

Karigiri

Ht, 33.3cm

Ornate vase shaped like a kalasa with a detachable lid shaped like a lotus supporting a coconut?

Acc. No. 1056

Ht. 30.5cm

Sprouted water vessel with a makara shaped handle with a lid which is in the shape of a minaret. It has a writing in Tamil " ne.14 Karigeri".

Acc. No. 1058

Ht. 31.8cm

Ornate Vase similar to no 1056

Acc. No. 1057

Ht. 30cm

Ornate Vase with two makara shaped handles and two other parts placed over its mouth one above the other, the top one being shaped like a vimana. In all it resembles in many respects a Grecian decorative vase.

Acc. No. 1053

Ht.43.5cm

Long cylindrical jug with a detachable lid shaped like a minaret with a modern Tamil writing on the base "ne.14 Karigeri".

Acc. No. 1052

Ht. 40.2cm

Ornate Vase with two makara-shaped handles. It resembles a Grecian decorative Vase.

Acc. No. 1054

Ht. 31.5Cm

## MUSLIM UTENSILS

A tumbler widening towards the mouth and showing foliage designs on its surface.

Acc. No. 797

Copper

Dia at mouth 9cm; Ht. 13.4cm

Hookah with funnel like mouth standing on a body, crescent shape.

Acc. No. 806

Bronze

Ht. 19.2cm

Ornate spittoon in two parts joined in the middle by a sunk cord. The upper part is in the shape of a vase while the lower part is bell-shaped. The article is replete with foliage designs.

Acc. No. 823

Brass

Ht. 13.7cm

Hanging lamp with chain. Lamp is in the form of a turtle with three wick-mouths issuing from the sides.

Acc. No. 90

Brass

Ht. 20cm; l.of the chain 90cm.

Spittoon with funnel like mouth and bulbous body with a central course of geometrical lines.

Acc. No. 822

Brass

Ht. 24.3cm

Hookah in the shape of a jar with a funnel like mouth and melon-shaped body with a circular rest.

Acc. No. 803

Brass.

Ht. 24.3cm

Ornate long necked kuja with bulbous body containing foliage designs in bold relief all over, a circular rest, a handle shaped like a snake whose raised hood moving on a hinge serves as a lid to the vessel. Over this hood can be seen a little cobra.

Acc. No. 839

Copper

Ht. 33cm

Water vessel in the form of a pumpkin with a circular rest, a spout with two yali heads. The pumpkin shows at its top the design of a full spread lotus with a bud over the seed vessel.

Acc. No. 829

Brass

Ht 33cm

Spouted water vessel in the form of a hexagon which is preserved in the body, the mouth, the lid and the spout in the form of an elephant's trunk with a peacock tail finish.

Acc. No. 833

Brass

Ht. 29.3cm

Water vessel of a peculiar shape with body shaped like a lotus, with a circular lotus rest narrow at the joint, with a parrot like handle and with a mouth suggesting a gorgoyal's provided with a fanlike ear on one side where the handle joins it.

Acc. No. 838

Brass

Ht. 28.2cm

Spouted water vessel with bulbous body and with foliage designs all over on the surface.

Acc. No. 837

Copper with lead coating

Dia at the mouth 10cm

Water vessel in the form of a globe with circular pyramidal rest, a spout with two yali heads in it one at the tip and the other joint.

Acc. No. 828

Brass

Hookah with a narrow funnel like mouth and body bulbous at the bottom resting on a circular base.

Acc. No. 799

Bell metal

Dia at the mouth 2.5cm at the base 5.8cm

Hookah with a narrow funnel like mouth and bulbous body shaped like a custard apple and having a circular rest.

Acc. No. 798

Bell Metal

Dia at the mouth 4cm; at base 5.8cm

Spittoon with a wide mouth and bulbous bottom resting on a circular base. It is shaped like a vase.

Acc. No. 819

Brass

Ht. 26.2cm

### **BIDRIE WARES**

Globular box perhaps for betel, with lid. Silver and impure gold encrustations of the Tahnishian type include designs such as lotus, flowers and foliage

Acc. No. 873

Alloy of Zinc and copper-

Dia 13.2cm

Tumbler with funnel like lid. Silver encrustations of Tahnishian type including designs such as foliage, peacock and other birds, lattice work and spirals are laid with surface of the black background.

Acc. No. 854  
Alloy of Zinc and Copper  
Dia on mouth 8.5cm

Globular box for betel with lid, the whole constituting a pumpkin. Silver encrustations of the Tahnishian type which are profuse include designs such as lotus, leaves, lines, arrowheads, foliage and dots.

Acc. No. 872  
Alloy of Zinc and Copper  
Dia of the box 12.6cm

Ball-shaped hookah with funnel like mouth and with encrustations of the Tahnishian type on its surface showing designs such as leaves, lines, ladders, foliages, arrowheads, borders and flowers.

Acc. No. 884  
Alloy of Zinc and Copper  
Dia at mouth 4.3cm

Spittoon in the shape of an octagonal vase with indented edges and each side shaped as a leaf with foliage designs encrusted in each. The vase is attached to a circular base consisting of two parts, the upper part shaped like a persopolitan capital and the lower like a belts base. Silver designs which are of Tahnishian type include foliage lines and arrowheads.

Acc. No. 846  
Alloy of Zinc and Copper  
Dia at the mouth 9.5cm

Bell-shaped hookah with a funnel like mouth with siver encrustations of the Tahnishian type are found on the surface of the hookah, the base and the tray, and show designs such as lines, leaves, flowers, lattice works, arrowheads, vines, dots, clusters and foliage.

Acc. No. 882  
Alloy of Zinc and Copper  
Dia at mouth 3.9cm



Bell-shaped hookah with a funnel like mouth resting on a detachable circular tray. Silver encrustations of the Tahnishian type which are present on the surface of both include designs such as blades, lattice-work, lines, foliages, arrowheads, clusters, dots and flowers.

Acc. No. 885

Alloy of Zinc and Copper

Dia at mouth 4cm

Vessel for storing water with narrow high neck, bulbous body, tail like hexagonal handle, straight, hexagonal spout with a projecting band in its centre, circular base narrow at the joint, and with a minaret shaped lid moving on a hinge. Silver encrustations of the Tahnishian type including designs such as lines, leaves, flowers, foliage, arrowheads are laid level with the black background formed by the alloy.

Acc. No. 849

Alloy of Zinc and Copper

Dia at mouth 3.5cm

Vessel for storing water with spout, handle and body bellying below supported on a circular rest. A circular lid shaped like a minaret and moving on hinges is placed over a mouth. Silver encrustations of Tahnishian type all over are seen.

Acc. No. 848

Alloy of Zinc and copper

Dia at mouth 7.8cm

Horn like hookah with circular rest and with silver encrustations of the Tahnishian type showing designs such as lines, foliage, arrowheads can be seen all over.

Acc. No. 892

Alloy of Zinc and Copper

Dia at mouth 2.8cm

Circular basin in the shape of a persopolitan capital with very wide and projecting rim and with a perforated circular lid provided with a knob at its centre and with two nails below intended for sliding into two slots, in the mouth of the basin. Silver encrustations of the Tahnishian type are found on the surface of the basin, on the inner side of the rim and on the outer side of the lid.

Acc. No. 869

Alloy of Zinc and Copper

Dia at mouth 10.6cm

Circular tray with silver encrustations of the Tahnishian type including designs such as lines, lattice work, foliage, peacocks and other birds and lotus.

Acc. No. 860

Alloy of Zinc and Copper

Dia 17.8cm

Bowl with circular rest. Encrustations are mainly in silver while inlay in impure gold looking almost like brass is also found though to a very little degree on the surface. Gold encrustations which include designs such as lines and lattice works are found on the outer side only.

Acc. No. 857

Alloy of Zinc and Copper

Dia at mouth 13.7cm

Cylindrical betel box with a pan in it and a lid enclosing it while the pan shows a single line of silver encrustation of the Tahnishian type, the box and its lid show on their outer surfaces silver inlay of similar type profusely.

Acc. No. 871

Alloy of Zinc and Copper

Dia of the base 11.7cm

Dia of the pan 10.7cm

Ht. 10.7cm

## STANDING LAMPS

Brass lamp with five wick mouths surmounted by the figure of a Kinnari

Acc. No. 28

Brass

Ht. 85cm

Hamsa lamp with five wick mouths and nail to tend the wick secured by a chain attached to it.

Acc. No. 31

Brass

Ht. 66cm

Brass lamp with five wick mouths and surmounted by Sarasvati seated on a Hamsa. The lower part of the shaft has five holes to hold extending lamps.

Acc. No. 35

Brass

Ht. 96cm

Brass Hamsa lamp with hood like projection. A Kinnari playing a vina surmounts the lamp.

Acc. No. 41

Brass

Ht. 61cm

Hamsa lamp with three pans of which the middle and the top ones are intended for holding oil. The middle part has nine wick mouths and the top one has six. The bottom pan is edged with sharp and narrow leafy pattern.

Acc. No. 36

Brass

Ht. 75cm

## **DRINKING VESSELS**

Vessel for storing water with several designs, the most important of which is a wide course containing a row of hamsas alternating foliage.

Acc. No. 589

Brass

Dia at mouth 12cm

Cooking or water vessel with three studded rests and with body shaped like a cucumber.

Acc. No. 617

Bell Metal

Dia at mouth 10cm

Water vessel used during puja showing several designs and containing a wide central course divided into eleven vertical bands showing anti clockwise Vishnu's incarnations- Matsya, Kurma, Varaha, Trivikrama, Vamana, Narasimha, Parasurama, Rama, Balarama, Krishna and Kalki.

Acc. No. 614

Copper

Dia at mouth 9.6cm

Water vessel with elaborate designs all over, the central course containing nine bands of foliage together with another nine of smaller foliage in the interspaces.

Acc. No. 612

Brass

Dia at mouth 11.2cm

Vessel for storing water shaped like a jug with a narrow mouth and a bulbous body showing among the other designs a central wide course of foliage.

Acc. No. 596

Brass

Dia at mouth 9.3cm

Vessel for storing water with widening mouth and circular rest. It shows in the middle a wide course in which a peacock with a very long tail.

Acc. No. 593

Brass

Dia at mouth 11.5cm

Water vessel with foliage designs on the body with the figure of Garuda repeated four times in their midst.

Acc. No. 608

Brass

Dia at mouth 8.3cm

Water vessel used by bairagi's both for cooking and drinking purposes. There are several designs present on the body important among them being the incarnations of Vishnu.

Acc. No. 607

Brass

Dia at mouth 8.4cm

Ornate water vessel shaped like a pumpkin with alternate sides of the pumpkin worked into foliage.

Acc. No. 597

Brass

Dia at mouth 8.2cm

Vessel shaped like a bell with mouth narrower than the body.

Acc. No. 622

Bell Metal

Dia at mouth 9cm

Vessel shaped like a Turkish jug with bulbous body curving angularly with narrow mouth and circular rest.

Acc. No. 606

Brass

Dia at mouth 7.4cm

Vessel for storing water shaped like a jug with a narrow mouth and a bulbous body showing among the other designs a wide course of ten bands with representations of ten incarnations of Vishnu one in each.

Acc. No. 595

Brass

Ht. 17cm; Dia at mouth 6cm

### **DRINKING VESSELS**

Bell-shaped lota with bottom shaped like a cucumber and resting on a circular rest. There is an inscription in modern Tamil on the rim reading thus—ma.mahalingam.

Acc. No. 658

Bell Metal

Dia at mouth 9.7cm

Drinking vessel resembling Moorish jug with narrow vase like mouth and bulbous body resting on a circular bottom.

Acc. No. 630

Bell Metal

Dia at mouth 4cm

Drinking vessel with body broad at the bottom and resting on a circular bottom.

Acc. No. 644

Bell Metal

Dia at mouth 7.2cm

Spouted water vessel having a yali's mouth and a silver rim. The body presents a wide course of vertical lines.

Acc. No. 660

Copper

Dia at mouth 8.8cm

Spouted water vessel having a lotus shaped mouth.

Acc. No. 661

Brass

Dia at mouth 8.3cm

Small water vessel with vase like mouth and body shaped like a pine apple resting on a circular bottom.

Acc. No. 613

Brass

Dia at mouth 6cm

Small drinking vessel with lead coating inside and with several courses, the central course showing three hamsas in the midst of foliage.

Acc. No. 636

Brass

Dia at mouth 6.4cm

Ceremonial water vessel with elaborate ornamentation all over in which foliage figures mostly. The body is fluted as in a pumpkin and shows twelve vertical courses with the designs of flower and parrot alternating.

Acc. No. 611

Copper

Dia at mouth 8.5cm

Ornate water vessel with vase shaped mouth divided into two parts by a projecting band in the middle and with a bulbous pumpkin-shaped body with its sides worked into foliage.

Acc. No. 659

Brass

Dia at mouth 6cm

Water vessel shaped like a kuja in three detachable parts. The lowest part is the vessel itself with a bulbous body, to the mouth of it is screwed in the middle part which is bell shaped lota. To this lota

is screwed in the topmost part which serves as the lid and which is surmounted by a handle in the shape of a ring.

Acc. No. 647

Bell Metal

Dia at bottom 9cm; Dia at mouth 9.7cm; Dia of the lota 7cm; Ht. 35.7cm

Water vessel with narrow vase like mouth and bulbous body resting on a circular bottom.

Acc. No. 655

Brass

Dia at mouth 5.5cm

Water vessel also used for cooking.

Acc. No. 604

Bell Metal

Dia at mouth 13.5cm

Small water vessel shaped like a persepopolitan capital with body shaped like a cucumber.

Acc. No. 632

Brass

Dia at mouth 8 cm

Vessel with vase like mouth and with a pumpkin shaped body with foliage designs and circular rest narrowing at the joint.

Acc. No. 821

Brass

Dia at mouth 15.5cm

Small water vessel in the shape of a Persepopolitan column with foliage designs and copper encrustations with lead coating inside.

Acc. No. 814

Brass

Dia at mouth 6.5cm



Drinking vessel with a long and narrow funnel like mouth and a bulbous body bent angularly resting on a circular bottom.

Acc. No. 657

Bell Metal

Dia at mouth 5.7cm

### **SOUTH INDIAN TOYS**

Peacock on four wheeled cart with tail unspread.

Acc. No. 702

Brass

Ht. 17.2cm; Length 10cm; Br. 6.2cm

Model of a spinning woman at the spinning wheel. She is seated on a bench with crossed legs.

Acc. No. 708

Brass

Ht. 7.8cm; L. 8cm; Br. 7cm

Recumbent bull with Linga in front and Linga covered.

Acc. No. 698

Brass

Ht. 6 cm; L. 8.5cm; Br. 6cm

Caparisoned horse standing on a base having holes for wheels (missing). A pair of stirrups present on the back. Evidently a toy cart.

Acc. No. 687

Brass

Ht. 12cm; L. 9.5cm; Br. 5cm

Child Krishna seated in Maharajalilasana posture on a bench and reclining on a cushion.

Acc. No. 710

Brass

Ht. 10.5cm; L. 8cm; Br. 5 cm

Recumbent bull on padmasana.

Acc. No. 689

Ht. 6.5cm; L. 5.5cm; Br. 3.7cm

Cow-herd kneeling in the attitude of milking. A rope between the knees suggests that it was intended to hold the milk pot.

Acc. No. 679

Brass

Ht. 13.5cm; L. 7.3cm; Br. 5.3cm

Warrior in the attitude of fighting with a dagger in the right hand and long shield in the left. He wears patra-kundalas in his ears and his hair is arranged into a kesabandha.

Acc. No. 680

Copper

Ht. 13cm

Cow and calf on one side and milkman milking on the other side, all standing on an oval base.

Acc. No. 690

Brass

Ht. 6cm

Caparisoned horse standing on a rectangular base.

Acc. No. 685

Brass

Ht. 7.6cm; L. 6cm; Br. 3cm

Bullock-cart of north Indian type. Bullocks are tied to a plate. The cart is separate. The cart man is seen in the front. A log of wood is seen on the cart over which a woman is seated in purdah.

Acc. No. 1216/54

Brass

Ht. 4.5"; Br. 3 3/4"

Caparisoned horse with front legs bent as if in galloping.

Acc. No. 686

Brass

Ht. ; L.6cm; Br.3cm

Toy cart moving on wheels supporting an elephant which carries on its back a warrior.

Acc. No. 669

Brass

Ht. 11.7cm; L. 6.3cm; Br.3.1cm

Toy cart (wheels missing) supporting an elephant which carries on its back a king in chair like howdah and a mahout on its neck.

Acc. No. 667

Brass

Ht. 13.3cm; L. 7.5cm; Br.3.3cm

Toy cart (wheels missing) with a ring for drawing, carrying an elephant on whose back a standard bearer is seen seated.

Acc. No. 668

Brass

Ht. 13.3cm; L. 7.5cm; Br. 3.3cm

Toy cart (wheels missing) bearing a galloping horse with rider holding a sword in his right hand. The rear legs of the horse appear to touch the head crawling Krishna placed in the foreground.

Acc. No. 675

Brass

Ht. 10.7cm; L.7.5cm; Br. 3cm

Toy cart moving on wheels supporting an elephant which carries on its back a warrior.

Acc. No. 669

Brass.

Ht. 11.7cm; L>6.3cm; Br.3.1cm

Ornate two wheeled chariot drawn by a horse on the back of which is seen seated a warrior holding a gun in his right hand. This is an exquisite art piece.

Acc. No. 672

Brass

Ht. 8.2cm; L. 6cm

Palanquin moving on four wheels and borne by four bearers, two on each side. Within the palanquin is seen seated two nobles. The phalki post is designed like a dragon with a decorative plate attached to its mouth.

Acc. No. 723

Brass

Ht. 8cm; L. 16.2cm

Palanquin carriage supported by four wheels. Four phalki bearers, two on each side stand on the axles of the wheels and carry the phalki post. Two nobles are seated with turban on their head, a close fitting long coat and with flower in their right hand.

Acc. No. 678

Brass

Ht. 16cm; Br. 10cm

Four wheeled chariot carrying a circular howdah placed on a lotus basin with a finial within a howdah whose pillars are in the form of rearing yalis. A king is seen seated. Two galloping horses are seen in the front.

Acc. No. 671

Brass

Ht. 16.2cm; L. 8.5cm; Br. 5cm

Toy cart in the form of a Padmasana moving on four wheels, bearing the elephant with a seat on its back attempting to snap the chains binding its trunk. The elephant bears in its forehead TENKALAI Vaishnavite namam mark.

Acc. No. 691

Brass

Ht. 22 cm; L. 16.2cm

Caparisoned horse standing on a padmasana with its front legs lifted up and placed on a plate with foliage design.

Acc. No. 688

Brass

Ht. 22.5cm; L. 15.5cm; Br. 8.6cm

Parrot on a plate with four wheels.

Acc. No. 1215/57

Brass

Ht. 7 ¼"; BR. 4 1/2"

Globular perforated rattle with six wheels design.

Acc. No. 739

Brass

Circumference 16cm

Globular perforated rattle with six lotus designs.

Acc. No. 742

Brass

Circumference 12cm

Perforated rattle in the shape of a mace.

Acc. No. 738

Brass

Circumference 14.2cm

Pumpkin with a stem.

Acc. No. 732

Brass

Circumference 36.8cm

Rearing yali standing on a padmasana with stumping legs with a seat attached to its back for the rider. Foliage springs from its mouth and touches the padmasana. Its front legs are lifted up as in galloping. Probably a vahana.

Acc. No. 700

Brass

Ht. 23.8cm; L. 16.5cm; Br. 9cm

Toy-cart without wheels, bearing a fully caparisoned horse whose rear legs are held by the groom while on its back seated a warrior Deva showing abhaya in his right hand. However, his weapons, sword and shield are placed on the horse's buttocks.

Acc. No. 676

Brass

Ht. 24cm

Toy-cart with four wheels carrying an elephant with loose trunk to the back of which is attached a double canopied howdah in which are seated a King on a padmasana and other man, probably a minister, behind him.

Acc. No. 666

Brass

Ht. 39cm; L. 21cm; Br. 10cm

## **BOXES AND NUTCUTTERS**

Spice box shaped like a vessel surmounted by a hamsa.

Acc. No. 493

Brass

Dia 6cm; Ht. 16cm

Spice box with lead coating and moving on wheels. It is shaped like a fish, the upper part of which is moving on a hinge, and secured to the bottom by a nail. The bottom have five apertures inside.

Acc. No. 484

Brass

L. 15cm; Br. 7.5cm

Ceremonial box with detachable lid shaped like a kalasa and containing the legend "Rama Jaya" repeated several times.

Acc. No. 458

Copper

Circumference 32.3cm

Perforated oval box with removable lid, the whole looking like a temple vimana of Salai type.

Acc. No. 471

Copper

L. 13.5cm; Br. 8.5cm

Spice box shaped like a tortoise standing on four legs and with five apertures. The lid moves on a hinge and secured to the bottom by a nail (now missing).

Acc. No. 483

Brass

Inner Dia 8cm

Chunnam box of Roman vase type with lid moving on hinges. Exhibits workmanship in which courses of daimon like stumps figures.

Acc. No. 496

Brass

Extreme circumference 34cm

Ornamental box in the shape of a hamsa standing on rectangular base with chamfered corners, the whole of which standing on wheels. The lid which is upper part of the hamsa is secured to the bottom by means of a hinge and a hook.

Acc. No. 472

Brass

Ht. 27cm; L.22cm; Br. 17.5cm

Box shaped like a pumpkin with detachable lid secured by a hinge and a hook.

Acc. No. 457

Brass

Circumference 62cm

Pyramidal box moving on wheels and having a handle attached to its upper part which in turn moves on hinges, and is secured to the bottom by a hook. Probably a betelbox.

Acc. No. 463

Brass

L. 19cm; Br. 13cm

Circular ornate box with detachable lid shaped like a minaret and secured to the bottom by means of a hinge and a hook.

Acc. No. 454

Copper

Dia 15cm



Perforated box with lid shaped like a minaret and secured to the bottom by chain and hook.

Acc. No. 451

Brass

Dia 21.5cm

Ornate circular box with nice handle surmounting the lid which is secured to the base by means of a hinge and a hook.

Acc. No. 455

Brass

Dia 21cm

A cylindrical box with five apertures one over the other intended for holding things of household use perhaps spices. The box reveals perforated workmanship, each aperture being removable and is surmounted by a lid shaped like a vimana.

Acc. No. 479

Copper

Ht.26.7cm

A cucumber like shaft which is long and hollow surmounted by a bull which is screwed to it. The whole is a box for holding scented sticks.

Acc. No. 480

Brass

Ht. 40.2cm

Chunnam box shaped like a mango with stopper screwed on to its mouth. A metallic ear on the side of the box and a ring at the top of the stopper indicate the presence of a chain now missing.

Acc. No. 513

Brass

Ht. 15cm

Spice box in the shape of a mango with three apertures and a lid moving on a hinge and screwed by a hook. The lid bears the figure of Ganesa.

Acc. No. 486

Brass

L. 6.2cm; Br.6.2cm

## NUTCUTTERS

Ornate nut cutter with upper part designed like a dragon and the lower part like cucumber- of fine and rare workmanship, details being intricate and in some places perforated.

Acc. No. 447

Iron

L. 16.5cm; Br. 5cm

Ornate nut cutter with upper part shaped like a peacock.

Acc. No. 450

Brass

L. 15.5cm; Br.8cm

Nut cutter with its upper part shaped like a swan.

Acc. No. 433

Brass

L. 15cm; Br. 9.5cm

Nut cutter surmounted by a yali with t hick hind legs.

Acc. No. 437

Brass

L.17cm; Br. 8cm

Ornate nut cutter in the shape of a fan, the upper part showing a lion on one side and two bears on the other.

Acc. No. 449

Brass

L 20cm; Br. 9.5cm

Nut cutter also to be used as palm leaf cutter with handles shaped like a dragon's tail surmounted and flanked by peacocks.

Acc. No. 443

Brass

L. 17.5cm; Br. 8cm

Nut cutter with its upper part shaped like a horse with a female rider.

Acc. No. 442

Brass

L.15cm; Br.6.5cm

Nut cutter with upper part designed like a dragon and the lower part like a cucumber- a fine workmanship with details being intricate and in some places perforated.

Acc. No. 446

Brass

L.16.5cm; Br. 5cm

Nut cutter shaped like a tiger standing upon a spotted deer.

Acc. No. 438

Brass

L. 16.5cm; Br. 8cm

Nut cutter shaped like a horse.

Acc. No. 439

Brass

L.18.5cm; br.8.2cm

Nut cutter with one side shaped like a woman.

Acc. No. 427

Brass

L.12.8cm; Br. 7cm

Nut cutter with its upper part shaped like a harnessed horse with a warrior riding on it.

Acc. No. 441

Brass

L. 15.2cm; Br. 9.5cm

### ASIAN BRONZES

Figure standing on a circular pitha with a handle like thing is seen.

Acc. No. 1290/59

Indonesia

Brass

Ht. 9"

A bearded man standing holding a mace in the right hand. His right leg is lifted up and thrown in front. He is standing on a rectangular pitha.

Acc. No. 1286/59

Indonesia

Brass

Ht. 9"

Figure almost similar to the above with beard and moustache.

Acc. No. 1291/59

Indonesia

Brass

Ht. 9"

An Indonesian King reclining on a pedestal. His head being supported by the right hand and the left hand is resting on his left leg. He is wearing a highly decorated upper garment with a head gear.

Acc. No. 1319/59

Indonesia

Brass

Ht. 5 ½"

Figure standing on a circular pitha. The left leg is lifted up and thrown in the front. The mace is loose.

Acc. No. 1288/59

Indonesia

Brass

Ht. 9 ½"

Similar figure without beard. The left leg is lifted up.

Acc. No. 1287/59

Indonesia

Brass

Ht. 9 ¼"

—do—

Acc. No. 1289/59

Indonesia

Brass

Ht. 9 ¼"

Dancing figure holding a mace in the right hand and a bell like thing in the left hand. He stands on a pitha.

Acc. No. 1285/59

Indonesia

Brass

Ht. 13 ½"

Sakunda, a hand lamp used in temple. It is in the shape of a vase with a leaf shaped oil pan on one side and a handle shaped like a nine hooded cobra on the opposite side. On the handle is the climbing figure of a child (probably Krishna?) while the spread region of the hoods shows Vishnu on Garuda and seen between his Devis.

Acc. No. 994

Nepal

Brass

Ht. 40.8cm; Br. 41cm

A Chinese saint.  
Acc. No. 1192/57  
Ht. 5 ½"; Br. 2 ½"

Standing lamp in the shape of a column with a figure of Durga on top, placed between Ganesa and Subrahmanya. Durga has eight hands holding- sword, arrow, goad, varada, abhaya, noose, bow and shield in her hands respectively. She is depicted as seated on a lion in front of the prabha which is surmounted over her.

Acc. No. 993  
Nepal  
Brass  
Ht. 62cm; Dia 22cm

A Chinese figure with beard etc., seated on a throne.  
Acc. No. 1298/59  
Ht. 9 ½"; Br. 7 ¼"

Miniature pagoda of Burmese type in two parts.  
Acc. No. 1295/59  
Burma  
Ht. 9 ½"

Sakunda, a hand lamp used in temples. It is designed like a vase with five hooded cobra shaped handle and oil pan surmounted by a design of Vishnu on Garuda. The handle has a climbing figure of a child on its back and shows below the hoods a god in worship.

Acc. No. 995  
Nepal  
Brass  
l. 25cm; Ht. 24.5cm

### **NEPAL-TIBET BRONZES**

Tara, goddess of mercy, from Nepal. She is seen seated on a Padmasana with two hands. Her right hand is portrayed in varada or boon bestowing while her left hand is in abhaya or protection

postures. Aureole, coronet and various ornaments are present on her.

Acc. No. 989

Nepal

Brass with gold gilt.

Total ht. 22cm

Durga, as Mahishasuramardini killing the demon Mahisha. She is seen standing on a semi circular pedestal, the front of which is perforated with a semi-circular indented projection below. Behind the pedestal are two sockets for holding the prabha are present. She has eighteen hands carrying the following attributes :- sword, arrow, kettle drum, goad, noose, vajra, kataka, trident with which she hitting Mahisha, kapala, kataka, holding the trail of the buffalo, bell, mace, bow and shield. She is standing with one leg placed on the back of her vehicle lion and the other placed on the demon Mahishasura. The demon is lying crouch with a human head and buffalo's body, while the buffalo head is shown in the foreground having been cut.

Acc. No. 990

Nepal

Brass

Ht. 22cm

Tara, the goddess of mercy from Tibet, seated on a padmasana. She has two hands, the right hand being depicted in varada posture while her left hand in the attitude of holding a plant by its stalk. There is a small aureole behind her head.

Acc. No. 984

Tibet

Brass

Ht. 13.7cm

Ornate bell for temple service with the handle surmounted by the head of a crowned King.

Acc. No. 1001

Nepal

Bell Metal

Barrel dia 12.5cm; Total Ht. 29.2cm

Buddha, (Dhyani Buddha?) with a kalasa held by both the hands. He is seated on a padmasana and has a coronet on his head while several ornaments with blue stones and pearls set in adorn his body. The hair and face are painted. Gilt is of excellent presentation.

Acc. No. 985

Tibet

Total Ht. 19cm

Lanka (Buddhist Deity) showing gold gilt profusely and with face and hair painted. The image is in five parts and is seated on a padmasana of elaborate workmanship with its lowest rim showing mythological scenes in sunk bands. Right hand is lifted up suggesting abhaya while the left rests on the lap with the palm rose. The usual coronet is seen on the head.

Acc. No. 991

Tibet

Brass

Total Ht. 77cm

Small ornamental bell for temple service with handle surmounted by the head of a crowned King.

Acc. No. 1002

Bell Metal

Basal Dia 9.3cm; Total Ht. 17.5cm

Buddha, seated on a padmasana with right hand in varada and left hand in dhyana. Ushnisha is present on the head and is painted. Eyebrows, eyes and lips are also painted.

Acc. No. 986

Tibet

Total Ht. 17cm



Tara, goddess of mercy, seated on a padmasana inscribed behind and a prabha attached to it. She has four hands- upper left hand holding a book, lower right showing varada and lower left holding nilotpala. The inscription is in Bengali.

Acc. No. 983

Tibet

Copper with gold gilt.

Total ht. 13.5cm

Namdusi also called Jambhala, God of Wealth. He is standing on a padmasana and holds in his right hand a closed chatra and in his left hand an ichneumon which holds in its mouth a vessel. He has a long Royal robe, a coronet and his face is painted. His hair and beard are also painted.

Acc. No. 987

Tibet

Total Ht. 16.5cm

Siva with three heads and six hands seated on a padmasana and with his Sakti sitting on his lap. There is an aureole behind his head. Right rows of hands show- jnana, kataka, and varada: left row shows:- book, kataka and abhaya. Hair is painted black and each head has a coronet. Sakti who has only two hands showing varada in the right while the left is holding a plant by its stalk. Her hair is painted red while a coronet adorns her head.

Acc. No. 988

Nepal

Total Ht. 19.5cm; Copper with gold gilt.

### **VAISHNAVITE TEMPLE RITUALS**

Brass stand for holding vessels used in temple worship shaped like a turtle and supported by three legs.

Acc. No. 205

L. 15cm; Br. 11cm

Ornate stand for image in four detachable parts. The lower part is a circular base, the second part is the middle of a shaft, third part is a circular aperture to one end of which a five hooded Naga (detachable) is attached.

Acc. No. 209

Total Ht. 39cm

Copper basin with base and handle probably intended to be used as a dhupakkal.

Acc. No. 198

Ht. 12cm; Dia of the top 13cm

Brass ornamental stand for vessel used in worship in the form of a tray supported by a circular base and hollow and a perforated shaft.

Acc. No. 208

Total Ht. 30cm; Dia at the top 29cm; Dia at the base 26.5cm

An oil can with handle shaped like a fish's tail on one side and a wick mouth on the other. A spoon with a handle shaped like a parrot's nose is secured to it by a chain. A similar parrot's neck and nose are attached to the end of the handle.

Acc. No. 156

Total L. 53cm; Ht. 10cm

A copper begging bowl shaped like a pumpkin showing in elevation designs of the namam between conch and discus (Detachable).

Acc. No. 388

Ht. 17cm; Dia at the base 20cm

Brass stand (mukkali) for vessels used in worship. It is circular plate supported by three legs.

Acc. No. 201

Ht. 13cm; Dia 22 1/2cm

Pair of copper padukas (sandals) with foot rests and with the designs of conch and discus carved, one on each.

Acc. No. 228

L. 10 1/2cm; Ht. 6cm

Copper chakra (weapon of Vishnu) shaped as an astadala-padma placed within two concentric circles with flames of fire on the four cardinal points. The whole is supported by a padmaṣana placed on a bhadrasana.

Acc. No. 223

Ht. 17cm

Sathari or Satakopam or Vishnu's sandals placed on a vimana. This will be placed on the head of the worshipper in Vaishnavite temples.

Acc. No. 229

Copper

Ht. 14.5cm; Basal dia 19cm

Copper conch with flames of fire on the four cardinal points, the whole supported on a padmapitha attached to a bhadrasana.

Acc. No. 224

Ht. 15.8cm

Brass octagonal stand for holding vessels used in worship and for burning camphor. It is in four parts. The first part is a sliding bull to the back of which is screwed the third part which is a shaft. To the shaft is screwed on the fourth part which consists of a circular tray for burning camphor enclosed by a number of leaves, probably lotus petals which can be made by rotation of the nail to take the shape of a lotus in its various stages, from that of a bud to that of a fully spread lotus in blossom.

Acc. No. 199

Total ht. 18cm; Dia at the base 8cm

Brass vessel for holding flowers etc., offered to Gods. IT is a circular perforated tray, the top finishing in nine petals and giving to the whole indented edges. The tray is supported on a circular base joined to the former by a shaft.

Acc. No. 235

Total Ht. 15.3cm; Dia at the top 16cm; Dia at the bottom 11.5cm

Brass ornate stand for vessel used in worship designed like a Roman vases piled one over the other. In the centre there is a rotating ring.

Acc. No. 204

Ht. 24cm; Dia at top 12cm; Dia at the bottom 11cm

Brass stand for holding vessels used in worship and for burning camphor. It is in two parts. The lower part is a circular perforated battlement placed on a turtle-shaped base. To this part is screwed on a second and upper part which consists of a circular pan intended for holding vessels and burning camphor also in it enclosed by a contrivance of mango-leaves that can spread to any shape but when closed is made to take the shape of a lotus bud.

Acc. No. 200

Total Ht. 19.5cm; Dia from Turtle's mouth to tail 11.5cm

Brass ornate stand for vessels used in worship. Both the base and the top which are circular are designed like lotus (padmasana). The top is a circular aperture into which the base of the circular vessel will go.

Acc. No. 203

Dia at the top 24.5cm; Ht. 39cm; Dia at the base 20cm

Brass ornate stand for vessel used in worship. It is in the form of a circular tray with intended edges and with two rows of pendants on the sides, the whole supported on three legs.

Acc. No. 202

Dia 22cm; Ht. 17.5cm

Ornamental figure of a woman standing on a tortoise and holding in her hands a collyrium box and its lid respectively. This should have been in temple use.

Acc. No. 409

Brass

HT. 15.7cm

Conch  
Acc. No. 20

Discus  
Acc. No. 21

### HAND LAMPS

Hand Lamp (Kaitali) of a rare type. Shaped like a Vimana with Kalasa top, a nail which on being removed reveals the interior of the vimana intended to contain oil which leaks out through a hole at its bottom into an oil pan placed below. The tail of the wick will then be placed so as to touch the hole from where it will draw the oil. The Vimana is an octagon, one of the sides bearing not only the oil pan but also the design of a parrot enclosing a trident, and another side (opposite to this) containing a handle shaped like a peacock's neck.

Acc. No. 123

Brass

L. 12.5cm; Ht. 14cm

Hand lamp of the Kaitali type with handle having intented arches showing namam between Sun and Moon and surmounted by a Hamsa placed on a kalasa. In front of the arches two parrots are shown, one on either side.

Acc. No. 109

Dia 10.5cm; Ht. 14cm

Hand lamp of the Kaitali type of ornate workmanship with the handle showing namam placed between sun and moon, the whole being surmounted by a pyramidal vimana placed between two birds with heads of animal.

Acc. No. 110

Dia 13cm; Ht. 17.5cm

Kaitali with handle showing inset Kali drawing out the entrails of a demon placed on her lap.

Acc. No. 126

Dia 11cm; Ht. 11cm

Hand lamp (Kaitali) of elaborate workmanship showing Gajalakshmi on handle and two figures holding miniature kaitalis in front. Small kaitalis can also be seen projecting from the sides of the oil pan. Also figures of Gajalakshmi with swords in two hands and two other seated men can be seen on the outer side of the oil pan.

Acc. No. 124

Ht. 18.5cm; Dia 13cm

Hand lamp (Kaitali called Gajalakshmi lamp) showing on the rim two seated monkey like figures and two women attendants, with tray in hands. Handle shows Gajalakshmi supported by a row of hamsas and surmounted by a vyala makara torana. A dancing figure of a woman can be seen behind the oil pan.

Acc. No. 120

Ht. 16.5cm; Dia 14cm

Ornate hand lamp (Kaitali) with handle showing Gajalakshmi, conch and discus and two attendant dipalakshmis. The base shows figures of two women, two horse riders and birds.

Acc. No. 133

Dia 18cm; Ht. 28cm

Hand lamp (Kaitali) with handle showing monkeys on either side.

Acc. No. 116

Dia. 12.5cm; Ht. 10cm

Ornate hand lamp with handle shaped in the form of makara torana prabha (detachable), enclosing a seven hooded naga. There are two miniature dipalakshmis in front of the handle.

Acc. No. 134

Dia. 18.5cm; Ht. 29cm

Hand lamp (Kaitali) with triangular handle showing a mango-like design on the edges and a similar one on the centre placed between two royal cranes. The handle is placed over a rope-like design.

Acc. No. 115

Brass

Ht. 13cm

Dia 10cm

Ornate hand lamp of the Kaitali type with handle shaped like a chakra. In front of the chakra stand on either side dipalakshmis.

Acc. No. 111

Ht. 21.5cm; Dia 15cm

Hand lamp (Kaitali) with ornate handle showing a namam above two hamsas. Centre of the oil pan bears an embossed lotus full blown and with six petals spread.

Acc. No. 113

Ht. 13.5cm; Dia 12cm

Hand lamp (Kaitali) with handle showing Gajalakshmi placed under prabha. There is a socket behind to hold the shaft of a parasol.

Acc. No. 119

Brass

Dia 13cm; Ht. 14.5cm

An ornate hand lamp (Kaitali) with handle showing Gajalakshmi and Adishesha above her head. Two attendant women with oil pan in their hands in front of the handle. The oil pan itself reveals several designs one of which shows a pearl like design with a knot behind.

Acc. No. 132

Brass

Dia of the pan 16.5cm; Ht 25cm

Ornate hand lamp (Kaitali) with handle showing Gajalakshmi placed on a row of girls while in front of the handle stand two women with Kaitalis in their hands. Figures of two women and two horse riders

can be seen on the sides of the pan.

Acc. No. 121

Brass

Ht. 17.5cm; Dia 12cm

Hand lamp (Kaitali) with handle in the shape of circular prabha with Lakshmi inset. Lakshmi is seated on a lotus and has four hands showing holding a padma, abhaya and varada. Centre of the oil can shows a padma with seed vessel exposed.

Acc. No. 118

Brass

Dia 10.5cm ht. 15cm

Hand lamp (Kaitali) with handle shaped like a prabha showing within a namam placed between Sun and Moon above and Chakra and Conch below.

Acc. No. 112

Brass

Dia 8cm

Ht. 13.5cm

Kaitali (plain) with handle showing cross within indented arches.

Acc. No. 130

Ht. 9.5cm; Dia 8cm

Kaitali with handle showing a cross placed between Moon and Sun, the whole inset by a rope like design and surmounted by a coconut placed over a Kalasa.

Acc. No. 129

Brass

Ht. 12cm; Dia 11cm

Hand lamp (Kaitali) with triangular handle showing a mango-like designs on the edges and a similar one in the centre placed between two royal cranes. The handle is placed over a rope-like design.

Acc. No. 117



Brass  
Ht. 13cm;  
Dia 10cm

### SAIVITE TEMPLE RITUALS

Stand for lighted wicks with four rows of overhanging leaves, four in each row, making in all seventeen wicks including the central shaft.

Acc. No. 416

Brass  
Ht. 28cm

Incense burner in the shape of a peacock. The upper part moves on a hinge and is a perforated lid. The tail is also perforated.

Acc. No. 146

Brass  
Ht. 23cm; L. 26cm

Camphor burner, with a circular base, and shaft surmounted by a figure of a child (detachable) with head on both the sides and a tray on head intended for burning camphor in it. From the middle of the shaft branch off six yalis each supporting on its head a tray for burning camphor in. Thus in all there are seven trays for burning camphor. The base has the following inscription in modern Tamil running along the rim of it alongside. Reading as "□ 2 visu varusham painguni masam 15teti maturai sri minachchi sundaresvarlukku Mu. Pichchekutti Chettiyar makan Muttuirulandi Chetti upayam "

Acc. No. 170

Ht. 21cm; Extreme width 19.5cm; Dia at the base 12cm

Camphor burner with circular base and shaft the top of which has a tray to burn camphor in. From the middle of the shaft branch off eight yalis each supporting a tray for camphor. To each of the branches are attached a bell and a grape bunch one below the other. The total number of trays for camphor is nine.

Acc. No. 171

Brass

Dia at the base 9.5cm; Ht. 21.5cm

Harati lamp with handle and some curious figure on it which has the legs and tail of a lion, wings, and the face of a bearded and crowned man holding in his hands the harati-tray having seven wick mouths.

Acc. No. 155

Brass

Ht. 15cm; L. 16.5cm

Incense burner shaped like a vimana, the upper part of which is a triangularly perforated lid moving on a hinge secured to the bottom by a nail.

Acc. No. 145

Brass

Ht. 27.5cm; Dia 16cm

Copper circular bathing stand supported by a bull. A stand is detachable and has a tube which goes into the head of the bull thereby enabling the water in the bathing stand to flow out through the bull's mouth.

Acc. No. 232

Brass

Dia 13.3cm; Ht. 16cm

Vessel for holding water offered to Saivite Gods. It is a bowl with rim worked in vertically twelve times, the intervening parts made thus cylindrical.

Acc. No. 174

Brass

Dia at the top 12.5cm; Dia at the base 5.5cm

Incense burner in the form of a flying Hamsa with however a design of yali attached to its tail. The upper part of the Hamsa which is perforated and moves on a hinge. On one side of the lower part is an inscription in mixed Tamil and Telugu reading as :- నీ || తిర || తి ||

Acc. No. 143

A copper *vibhuti-madal* in the shape of a bird's beak intended for keeping sacred ashes. On the inner side of its bottom is worked as a turtle.

Acc. No. 195

L.29cm; Ht. 13.5cm

Incense burner in the form of a bulbous Kalasa, the top of which is a lid perforated and moving on a hinge.

Acc. No. 144

Brass

Ht. 21cm; Dia 11.5cm

### SAIVITE TEMPLE RITUALS

Dipakkal, which is inscribed on the handle, supporting Vyagrapada with incense burner and bell in his hands placed between two flying Devis (detachable) with candelabra in hand. The inscription runs thus:-

Acc. No. 165

L. of the base 20cm; Ht.13cm

Dipaharati of ornate type showing a single socket for light supported by a mythical animal superficially looking like a horse, being placed on branches issuing out of a circular base, the middle part of which is designed as a lotus.

Acc. No. 163

Brass

Ht. 23cm; Dia at the base 9.5cm

Dhupaharati lamp consisting of prabha (detachable) enclosing a trident and having five wick holes, the holes standing on a handle.

Acc. No. 160

Brass

Ht. 18cm; L of the base 17.5cm

Dipaharati lamp with a detachable prabha having seven light holes and enclosing the standing figure of sage of Vyagrapada with lamp in one hand and a bell in another. The whole stands on a handle.

Acc. No. 162

L. of the base 19cm; Ht. 17.5cm

Dipaharati lamp with circular aperture for dhupa and having a detachable prabha over.

Acc. No. 161

L. of the base. 22cm; Ht. with prabha 25cm.

Vessel for having water etc., over Saivite images. It is a bowl with three bulls and three lingas on yoni placed on th top rim alternately. The following figures can be seen on its outer side:- Three heads of Siva placed alternately between, a trisula, Sun and the Moon.

Acc. No. 177

Dia at the top 8.5cm; Ht. 7.5cm

Vessel for pouring water over Saivite images. It is a bowl with five bulls and five lingas on yoni placed alternately over its rim which has at the end a slot for a shaft. The middle part of the bowl shows on the other side the following figures:- head of Siva, Ganesa, Head of Siva, the Sun, Head of Siva, the moon, Head of Siva and a dvarapalaka. Below these figures are inscription in Telugu (modern).

Acc. No. 176

Dia at the top 7cm; Ht. 9.5cm

Dhupaharati in the shape of a square base placed on a handle and supporting a peacock'

Acc. No. 158

Ht. 14.5cm; l. of the base 19.5cm

Incense burner designed as vase placed on a tray. The whole is perforated and is surmounted by a cover moving on a hinge.

Acc. No. 147

Ht. 16cm; Dia of the base 16.5cm

Bell of bell-metal with brass handle surmounted by a couchant bull.

Acc. No. 237

Ht. 27cm; Dia at the base 14.5cm

Vel, Subrahmanya's weapon (spear) in three parts:- The lowest part is a bell like base, to which is attached the second part which is a shaft, the top of which carries a square base on which stands a peacock; to the back of the peacock is attached the third part which is lance-top in the shape of a leaf.

Acc. No. 226

Total height 67cm

Vessel in the shape of a goose for storing oil, and with a handle. Oil will pour out through the mouth of the goose.

Acc. No. 383

Brass

Ht. 33cm; width 36cm.

Brass bathing stand for saivite images in the form of a tray with gomukha or outlet for water in the shape of the head of a cow.

Acc. No. 192

Dia. 16cm; Total length 27cm.

### PAVAI LAMPS

Dipalakshmi with oil pan of leafy pattern held by both the hands. She is standing on a padmasana of inverted padma design and is elaborately decorated as a south Indian bride while a peacock has perched itself on her right shoulder. A breast band covers her breasts.

Acc. No. 93

Ht. from vase 44cm; Ht. of Lakshmi alone 31cm.

Dipalakshmi is standing on a padmasana attached to a bhadrasana, the lower part of which has an inscription in three lines in Tamil reading as "

Translation:- “ Dedicatory gift to (god) Ranganayaka by Onthayammal, wife of Pachhai Chetty, on the 13<sup>th</sup> instant in the month of Chittirai of the cyclic year Saumya” of intricate workmanship. A strand of hair (Veni) behind is missing. A parrot rests on her right shoulder. There is a breast band.

Acc. No. 103

Ht. with pedestal 59cm; Without pedestal 46cm.

Dipalakhshmi of slender finish holding oil pan in her hands. She is standing though on a padmasana which carries several other designs also. A peacock which is seen resting on her right forearm is broken and missing. Breast band is present.

Acc. No. 94

Brass

Height with pedestal 30cm; Without pedestal 20cm.

Dipalakhshmi standing on an elaborate padmasana and holding in her hands an oil pan. Details worth noting are two parrots perched on her shoulders, a hamsa over her head and breast band covering her breasts.

Acc. No. 99

Height with pedestal 43cm; without pedestal 29cm.

Dipalakhshmi standing on an elaborate padmasana and holding an oil pan in her hands. Peculiar and interesting details worth noting are:- a breast band covering her breasts, a parrot on the right shoulder and a side knot of hair thrown on her left side.

Acc. No. 98

Brass

Height with pedestal 38cm; Without pedestal 27cm.

Dipalakhshmi with oil pan in her hands. Interesting details worth noting here are:- the arrangement of hair as in the caase of nammalvar and the breast band over her breasts. The petticoat is highly conventional.

Acc. No. 101

Brass

Height 20cm.

Dipalakshmi standing on a padmasana and holding the oil pan in her hands. Details worth noting are:- a parrot on the right shoulder and a maharashtrian turban on her head. Superficially it would appear to be a male figure. A sacred thread is also present on the torso which adds beauty to the image.

Acc. No. 102

Height with pedestal 11cm; Without pedestal 9.5cm.

Diapalkshmi of exquisite workmanship standing on an inverted padmasana and holding in her hands an oil pan. She has a breast band. A parrot is beautifully perched on her right shoulder. Behind her left arm can be seen an inscription in Tamil “

“ probably recording that this is the thirteenth lamp belonging to the temple of a god whose name commenced with the letter “thi”

Acc. No. 97

Brass

Height with pedestal 40cm; without pedestal 28cm.

Dipalakshmi standing on the base of a kuttuvilakku and holding between her hands an oil pan. She has a breast band while two birds (parrot or peacock) perched on her shoulders would appear to be pecking at her patrakundalas.

Acc. No. 96

Brass

Height with pedestal 30.5cm; without pedestal 23cm.

Pavai Vilakku. Standing with a lamp in her hands. Her hairdo is resembling a kondai with a long plaited hair. A bird resembling parrot perched on her left shoulder. She is wearing elongated earlobes. A long necklace adorns her neck.

Acc. No. 2488/93

Brass

Ht. 13cm.

## LAMPS

Brass temple hanging lamp with chain. Wick mouth is placed in the centre of the pan.

Acc. No. 44

Dia of the oil pan 20cm; length of chain 111cm

Brass hanging lamp with chain and a bird in the centre of the pan.

Acc. No. 46

Height of the lamp 18cm; Length of the Chain 69cm.

Brass hanging lamp with a single wick mouth shaped like an animal's head and surmounted by a hamsa.

Acc. No. 45

Height of the lamp 32cm; length of the Chain 109cm.

Ornamental candle stand with good workmanship. The lower part contains a socket for the candle placed within a wider ring, both with indented edges. This has a chain also.

Acc. No. 92

Brass

Total height of the lamp 40cm; Length of the chain 24cm.

Inscribed brass lamp with oil-pan having five wick mouths surmounted by a design resembling the custard apple (seethapalam). Shaft designed like vessels put one over the other. Inscribed in two parts:-1. In modern Tamil on the base containing letters "Siva Aa" and recording the name of Siva and suggesting that probably the lamp belonged to a temple dedicated to Siva.

2. In urdu recording that one Shaik -allah- Baksh made this lamp.

Acc. No. 72

Ht. 56cm.



Brass lamp with shaft shaped like vessels placed one over the other. Oil pan has seven wick mouth and is surmounted by a design resembling a tapering and pointed kalasa.

Acc. No. 65

Malabar

Ht. 75cm.

An inscribed brass lamp with oil-pan having seven wick mouths and surmounted by a pumpkin-like design with a tapering top finish. An inscription in modern Tamil in the rim of the base records the gift of this lamp to the god Minakshisundaresa at Madurai by Karuppan Chetty, son of Palaniappa Chettiar of Devakottai on the 1<sup>st</sup> of the month of Avani of the year Savumya. The inscription runs thus:-

Gift of Karuppan Chetty son of Devakottai Palaniappa Chettiar to Madurai Meenakshi Sundareswara dt. Sowmya, Avani-12"

Acc. No. 78

Brass lamp with shaft fashioned like so many pots placed one over the other, a projecting plank (abacus) intervening between every two pots. Oil-pan has seven wick mouths and is surmounted by a kalasa with pointed finial.

Acc. No. 60

Ht. 71cm.

Brass lamp of uncommon pattern with top shaped like a pumpkin with a pointed end. Oil-pan has seven wick mouths and has the usual nail to tend the wicks secured to it by a chain. The nail is shaped like a parrot.

Acc. No. 55

Ht. 64cm.

## LACQUER WARE

Fan

Acc. No. 410/51

Tray

Acc. No. 405/51

Ornate rectangular tray with four lion's legs and corniced edges.  
The inside shows in bold relief flowers and foliage.

Acc. No. 1086

Wood

L: 44.8cm; Br: 28.7cm

A Burmese Pagoda with gold gilt and set with glass bits of  
different hues.

Acc. No. 172/43

Ornate rectangular tray with four stumpy legs and corniced edges.

Acc. No. 1085

Wood

L: 63.3cm; Br.: 39cm.

Ornate Kondapalli box with lid moving on two hinges and provided  
with lock and key. Designs in which foliage figure conspicuously  
can be found on the outer side.

Acc. No. 1090

Wood

L: 34.9cm; Br: 19cm; ht. 9.8cm.

Basket with lac laid over.

Acc. No. 1089

Wood

Dia. 9.8cm.

Ornate fan showing in vertical bands foliage on one side and  
peacock's feathers on the other. On one side of the handle are  
written the following:- 1885 // NOSSAM

.....

recording that the fan was perhaps made by or in Nossam on the  
10<sup>th</sup> of June, 1885AD.

Acc. No. 108

Acc. No. 497

## LAMPS

Brass lamp with five wick mouths surmounted by Lakshmi seated on a two headed Hamsa.

Acc. No. 30

Ht. 78cm.

Brass lamp shaped like a tree with two branches, one on either side, with three circular oil-pans each surmounted by a kalasa finial.

Acc. No. 63

Ht.34cm.

Strnding lamp with five wick mouths and simple moulding. It is of three parts.

Acc. No. 240/50

Ht. 20.5"

Brass high ornamental lamp with adjustments to raise and lower the oil-pan which has five wick mouths.

Acc. No. 34

Ht. 100cm

Brass ornate lamp with nine branches shooting out from the middle of the shaft. Each branch has a circular oil-pan with a lotusbud or flame like design shooting up from its centre. Main oil-pan of the lamp has six wick mouth and is surmounted by an arch tapering at the top.

Acc. No. 62 Ht. 65.5cm.

Brass lamp with adjustable parts. The oil-pan has five wick mouths, surmounted by a design having on one side a conch and discus on the other. This is evidently from a Vaishnavite temple.

Acc. No. 53

Ht.65cm.

## ORNAMENTAL PLATES

Ornate tray with two parrots in the centre, foliage courses around, lotus petalled rim and studded edge. Peacock's feather designs are found on the lotus petalled rim.

Acc. No. 556

Copper

Dia. 32.5cm

Perforated tray with the whole centre in perforated workmanship showing foliage enclosing an eight petalled lotus laid on another of twenty petals.

Acc. No. 579

Brass

Dia. 26.5cm

Ornate tray in the shape of a fully spread lotus with two pairs of hamsas in the centre, foliage courses, lotus petalled rim showing peacock's feather, and shrudedged edge.

Acc. No. 558

Brass

Dia. 34.5cm

Ornate octagonal tray (laid on a rectangle) with perforated indented edges and foliage courses.

Acc. No. 573

Brass

Length: 30.8cm; br. 26.8cm.

Ornate tray with designs of foliage, zigzag lines, sun's rays and rings, the last mentioned at the edges.

Acc. No. 542

Copper

Dia 38.5cm

Octagonal tray with foliage designs and eleven rectangular bands showing the ten incarnations of Vishnu with Ganesa and an unidentified figure. These bands enclose three circular courses, in turn enclosing the central lotus.

Acc. No. 586

Brass\

#8.5cm square.

Tray with peculiar designs clustering round a lotus background with wavy edges.

Acc. No. 548

Brass

Dia. 31.5cm.

Ornate tray of exquisite workmanship in the shape of a fully spread lotus, with edges smoothly indented and with foliage courses around a central circle.

Acc. No. 570

Brass

Dia 22cm.

Ornate tray showing the following embossed designs- hamsa in the centre surrounded by foliage courses, peacock's feathers on the rim of lotus petal finish and studded edge.

Acc. No. 555

Copper

Dia 44.5cm.

### **COPPER EMBOSSED PLATES**

Sage Vyasa raising the dead to console Dhritarashtra and others on the banks of Ganges.

Acc. No. 15

Copper

Length 42.5cm; Breadth 29cm.

The Pandavas and Kauravas playing the dice game in the presence of Dhritarashtra.

Acc. No. 16

Copper

Len. 31cm; Br. 21cm.

Sethubandhana or Rama crossing the ocean by constructing a bridge with the help of monkeys across the channel.

Acc. No. 3

Len. 31.5cm; Br. 18.5cm.

The churning of the ocean of milk by the Devas and Asuras to get nectar.

Acc. No. 1

Copper

Len. 31cm; Br. 14cm.

Gajalakshmi with attendant elephants.

Acc. No. 7

Copper

Len. 28cm; Br. 23cm.

Fight between Bhima and Duryodhana, Bhima hitting the latter on his thigh with his club true to his vow.

Acc. No. 17

Copper

Len. 31cm; Br. 21cm.

Mahishasuramardini, the form taken by Parvati to annihilate the demon Mahishasura.

Acc. No. 6

Copper

Len. 29.5cm; Br. 24cm.

Venugopala playing his flute to the cows.

Acc. No. 4

Copper

Dia. 28cm.

Unidentified, probably representing the minsral Narada with Vina in hand addressing or singing to a bearded King or Sage mounted on a fish.

Acc. No. 8

Copper

Len. 28cm; Br. 23cm.

Sesha-sayin, Vishnu recling on Sesha or Adisesha, his serpent couch.

Acc. No. 5

Copper.

Len. 30cm; br. 23cm.

Draupati vastrapaharana- Dussasana tearing Draupati's cloths off in public court after she had been won in the game of dice by his brother, Duryodhana.

Acc. No. 13

Copper

Len. 18cm; Br. 13cm.

Fight between Bhima and Dussasana in which the former kills the latter with a sword.

Acc. No. 19

Copper

Dia 19cm.

A scene depicting the fight between Karna and Arjuna in archery.

Acc. No. 18

Copper

Dia. 18.5cm.

Indra, the god for rain on his mount white elephant.

Acc. No. 21

Copper

Len. 12cm; Br. 10cm.

Dharmaputra performing Rajasuya sacrifice after defeating Kauravas.

Acc. No. 14

Copper

Len. 18cm; Br. 13cm.

Ganapati, with his vehicle mushika.

Acc. No. 22

Copper

Len. 12cm; Br. 10cm.

Santanagopala, baby Krishna bringing his right toe near his mouth to suck.

Acc. No. 20

Copper

Len. 12cm; Br. 10cm.

Rasakrida scene depicting Krishna sporting with gopis in the order of one between two gopis.

Acc. No. 11

Copper

Len. 22cm; Br. 8.5cm.

Nataraja

Acc. No. 23

Copper

Len. 12cm; Br. 10cm.

Santanalakshmi, one among the ashtalakshmis, bestower of children.

Acc. No. 24

Copper

Len. 10cm; Br. 7cm.



Gajalakshmi with an attendant elephant on one side and a peacock on the other.

Acc. No. 25

Copper

Len. 10cm; Br. 7cm.

Krishna holding up the mountain of Govardhana to protect Gokula from the torrents of rain brought by Indra.

Acc. No. 10

Copper

Len. 24cm; Br. 9cm.

Dhanyalakshmi, one among the ashtalakshmis as the harvest goddess with paddy stalks held in her hands.

Acc. No. 26

Copper

Len. 10cm; Br. 7cm.

Sarasvati, the goddess of learning, playing on vina.

Acc. No. 12

Copper Len. 10cm; Br. 7cm.

Siva and Parvati with bull, a gana and a rishi.

Acc. No. 9

Copper Dia 20cm.



Porcelain Wares



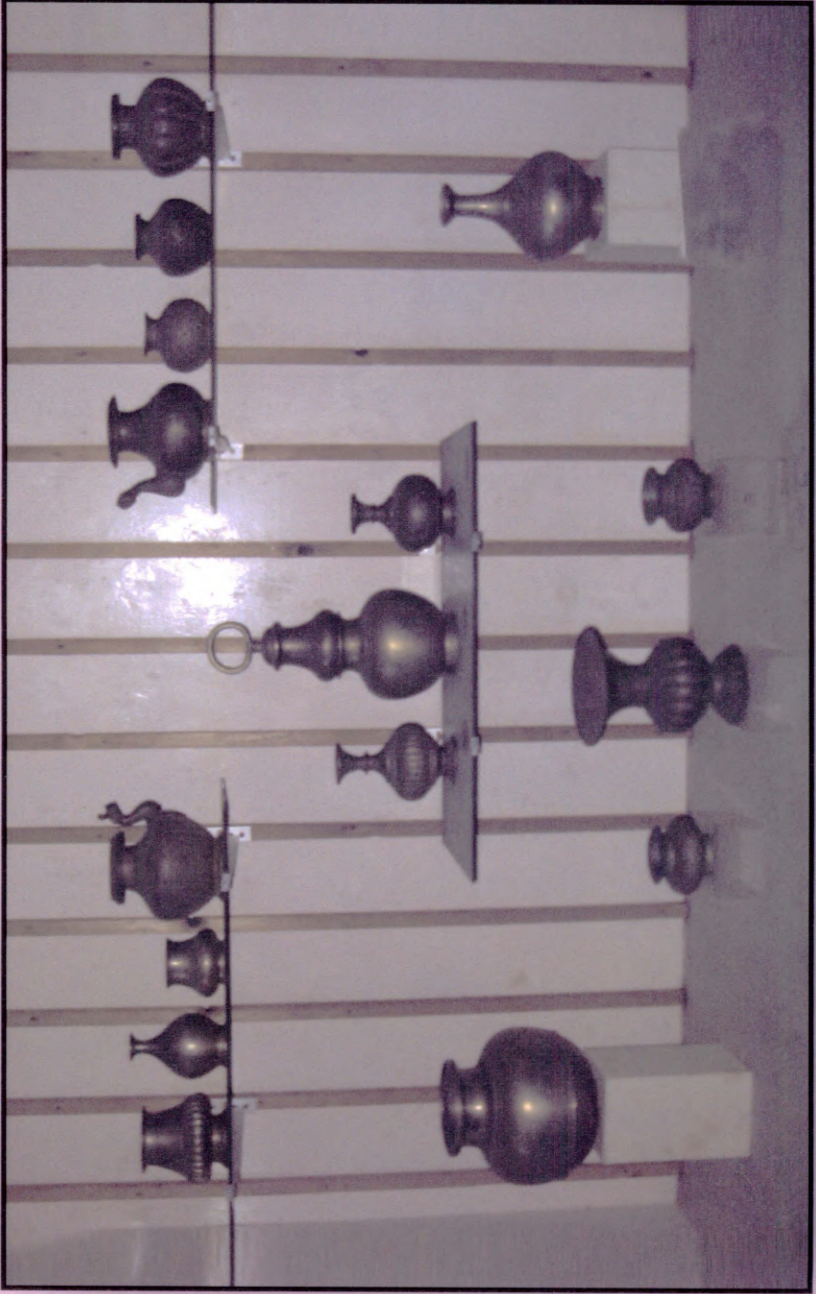
Glazed Potteries



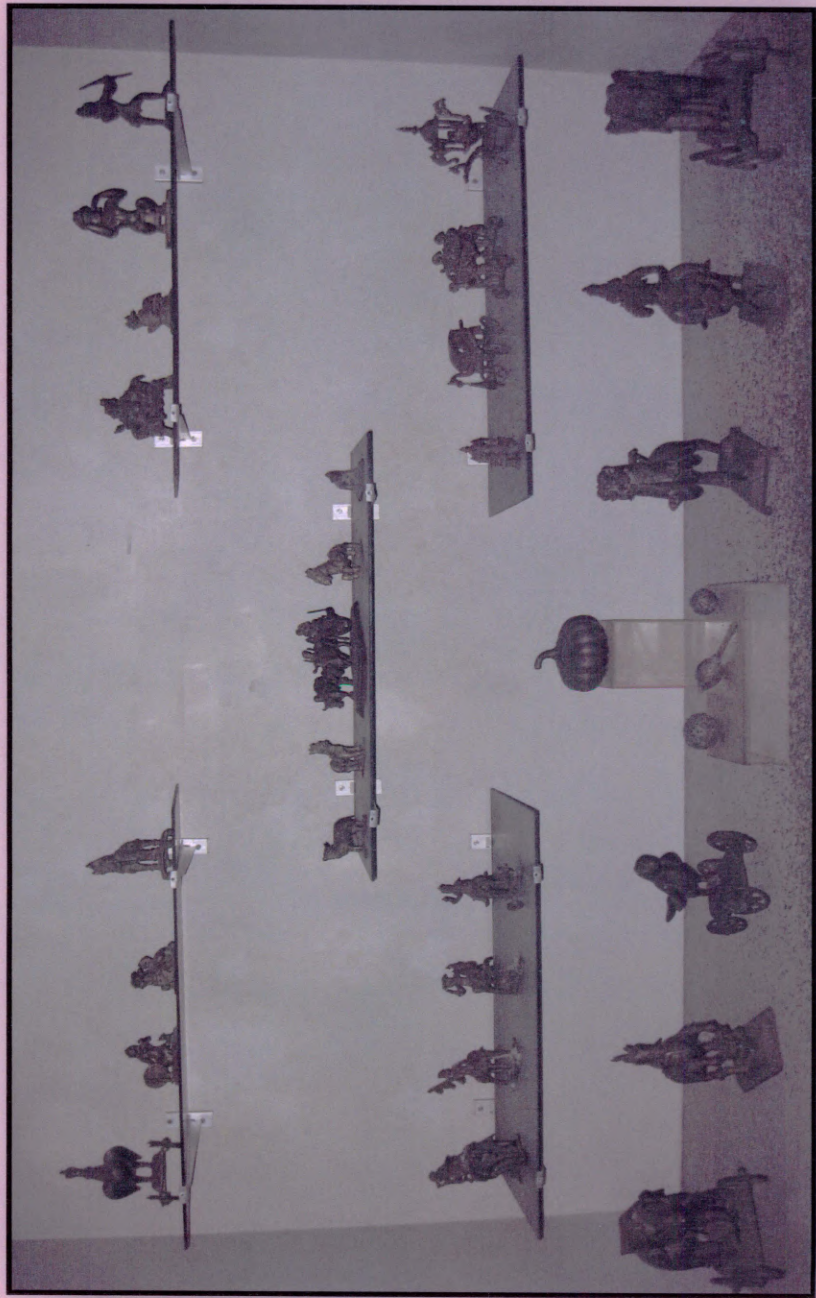
Bidrie Wares



Standing Lamps



South Indian Drinking Vessels



South Indian Toys

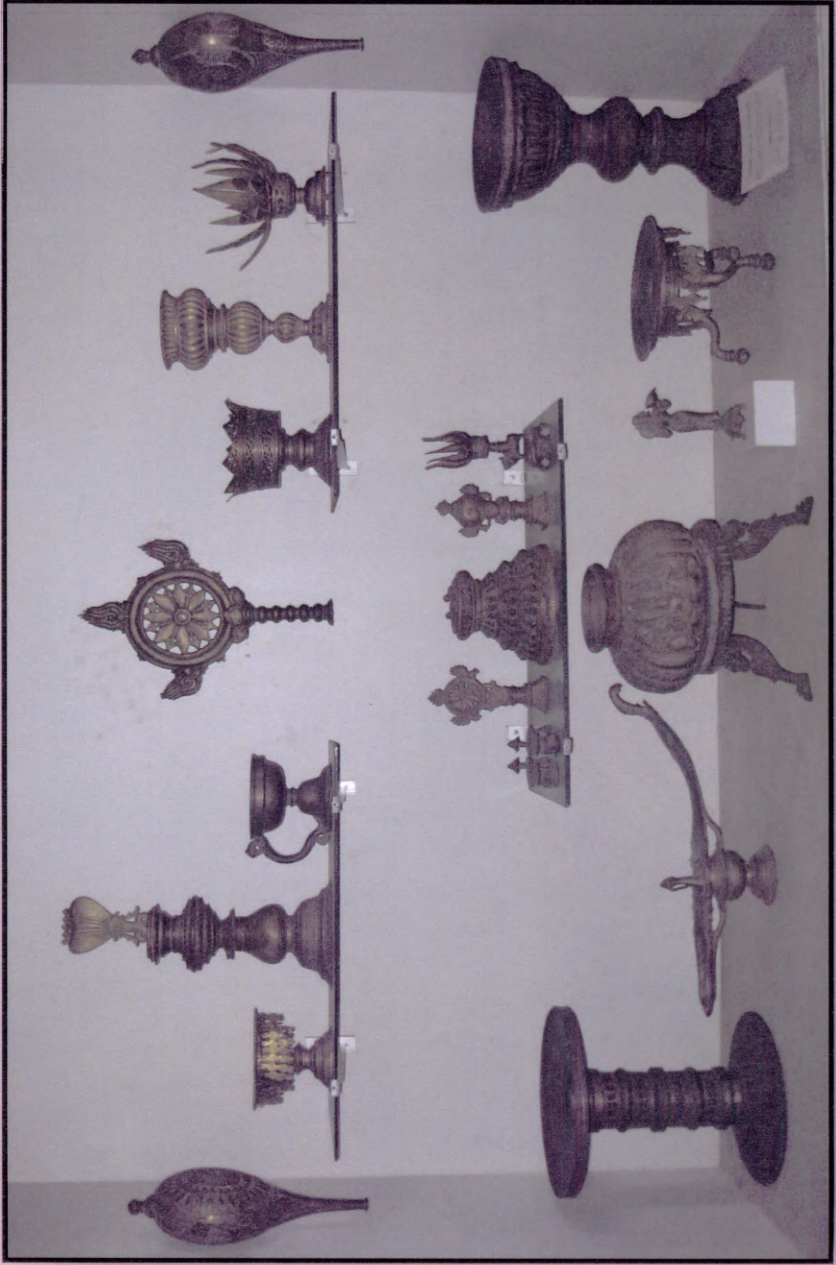


Asian Bronzes





Nepali Tibet Bronzes



Temple Rituals - Vaishnavite



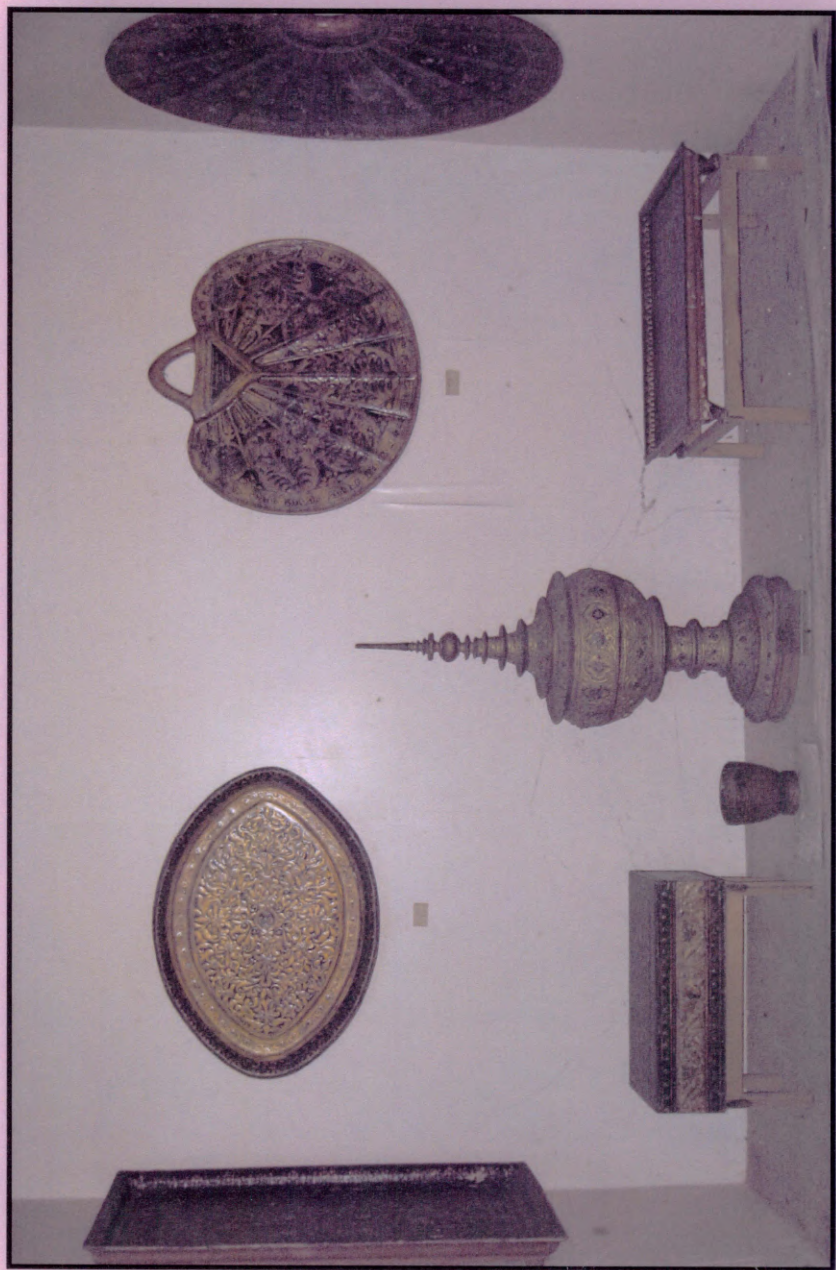
Hand Lamps



Temple Rituals - Saivite



**Pavai Vilakku**



Lacquer Wares



**Ornamental Plates**



**Copper Embossed Plates**





